

A satellite image of Hurricane Harvey, showing a large, well-defined eye and a dense, swirling cloud structure over the Gulf of Mexico. The coastline of Texas and Louisiana is visible on the left and right sides of the image.

# ***Hurricane Awareness 2025***

***NAS Corpus Christi***

A red arrow originates from the text 'NAS Corpus Christi' and points towards the center of the hurricane, specifically towards the eye.

## ***RUN FROM THE WATER, HIDE FROM THE WIND!***

NASCC  
Emergency  
Management  
Department

Hurricane Harvey from the GOES-16 satellite



# 2025 Hurricane Predictions

## 2025 Hurricane Season Outlook

Atlantic Basin

Colorado State University

Average

2024 Season

Total Named

17

14

18

Hurricanes

9

7

11

Cat 3 +

4

3

5





## **2024 Predictions:**

17 - 25 Named Storms

8 - 13 Hurricanes

4 - 7 Major Hurricanes

4 - 6 US Landfall

120 – 160 ACE Rating

(Accumulated Cyclone Energy)

## **2024 Season (actual storms)**

18 Named Storms (1 subtropical that didn't get named)

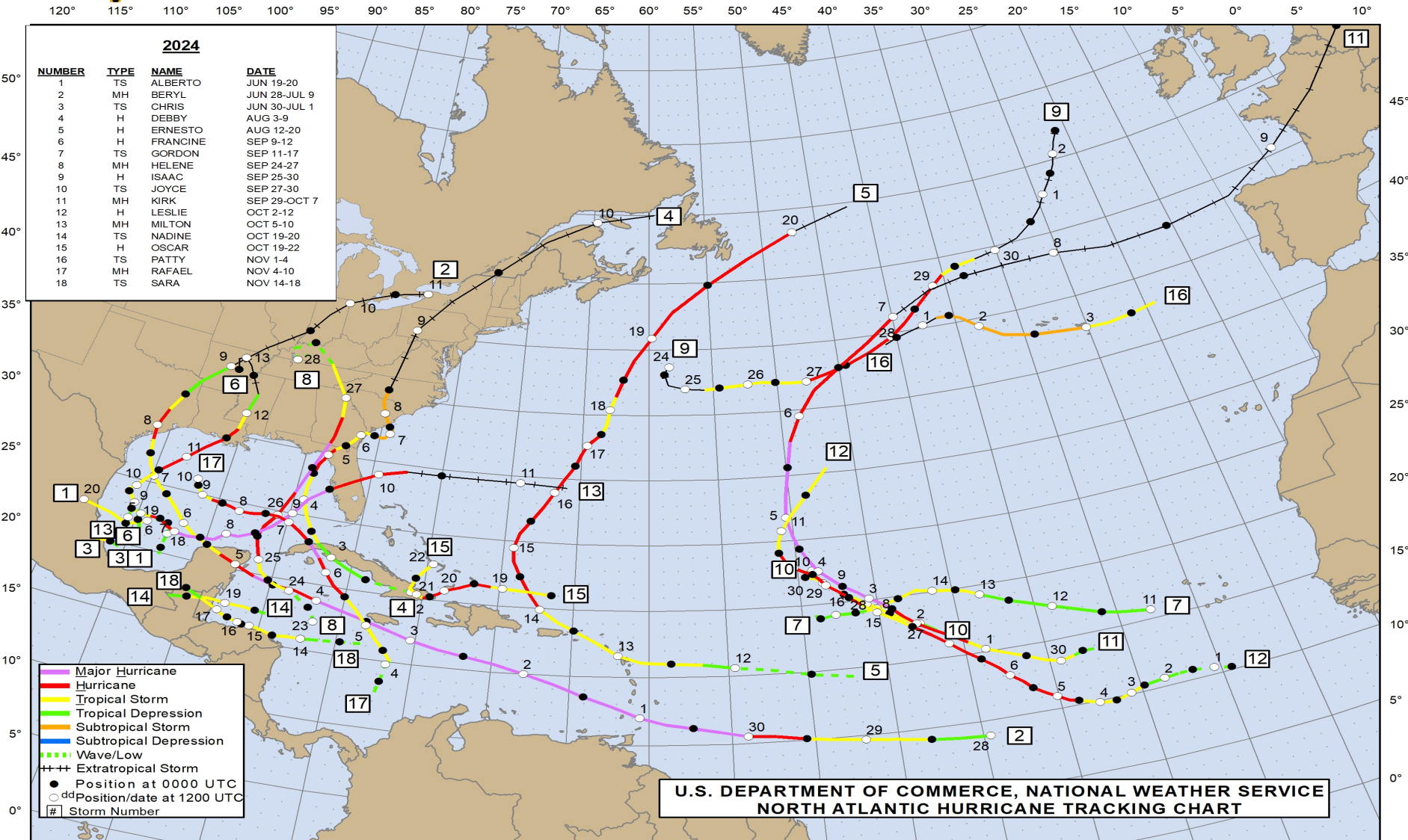
11 Hurricanes

5 Major Hurricanes

5 Made Landfall



# 2024 Tracks





# 2025 Hurricane Names

## 2025 Atlantic Hurricane Season Names

Andrea	Gabrielle	Melissa	Tanya
Barry	Humberto	Nestor	Van
Chantal	Imelda	Olga	Wendy
Dexter	Jerry	Pablo	
Erin	Karen	Rebekah	
Fernand	Lorenzo	Sebastien	



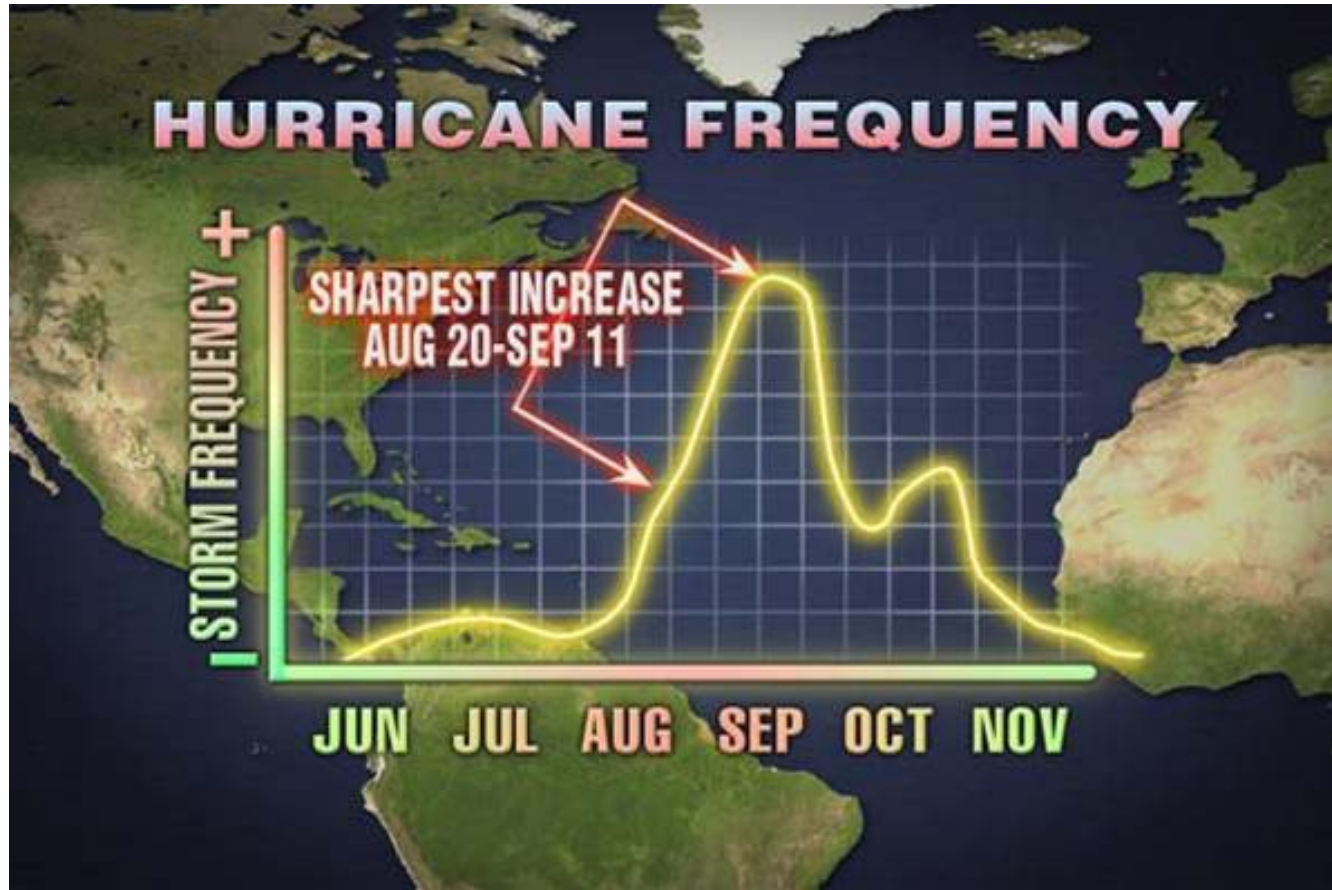
# Changes to Our Upcoming Weather Patterns

- El Niño weather effects can influence hurricane development, resulting in more eastern Pacific hurricanes and fewer Atlantic hurricanes.
  - This is caused where sea surface temperatures in the central and eastern tropical Pacific Ocean are warmer than average.
  - This creates upper-level shear that reduces a hurricane's ability to steer west.
- La Niña acts to boost Atlantic hurricane activity.
  - Cooler Pacific waters below the equator and weak upper winds in the Atlantic aid development of hurricanes.
- ENSO-neutral is an intermediate phase between El Niño and La Niña when water temperatures are neither unusually cold or warm.
  - ENSO-neutral is favorable for Atlantic hurricanes, like La Niña is, because of lower wind shear over the Atlantic.
  - It is considered a 'warm neutral' (warmer than usual in the equatorial Pacific but not quite warm enough to officially classify as El Niño), which can lower activity a little bit.





# Seasonal Peak





# Hurricane Harvey Damage







# Storm damage before flooding receded





# Hazards Associated With Hurricanes

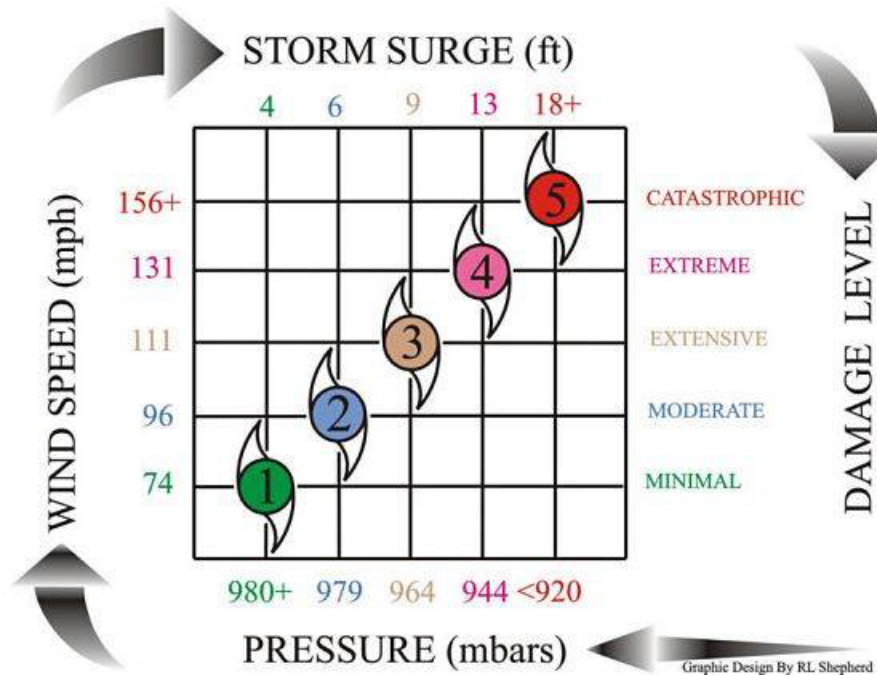






# Hurricane Categories

## SAFFIR-SIMPSON HURRICANE SCALE



**CAT 1 – minimal damage**  
**Winds 74-95 MPH, (64-82 kts)**

**CAT 2 – moderate damage**  
**Winds 96-110 MPH, (83-95 kts)**

**CAT 3 – extensive damage**  
**Winds 111-130 MPH, (96-113 kts)**

**CAT 4 – extensive damage**  
**Winds 131-155 MPH, (114-135 kts)**

**CAT 5 – catastrophic damage**  
**Winds above 155 MPH(>135 kts)**



# **PERSONAL DISASTER PREPAREDNESS**

**What is best / makes sense for you and your family?**

**What is most important to you?**

**Photos?**

**Documents?**

**Xbox?**

**Laptop?**

**Pets?**





**The safety of your family during and after a hurricane is a direct result of your planning and readiness. At a minimum, you should:**

- Have a family evacuation plan**
- Have the following ready to bring with you:**
  - ✓ At least a 3-day supply of water (one gallon per person, per day)
  - ✓ At least a 3-day supply of non-perishable food
  - ✓ At least, one change of clothing and shoes per person
  - ✓ One blanket or sleeping bag per person
  - ✓ First-aid kit   ✓ Emergency tools   ✓ Flashlight, extra batteries
  - ✓ Battery-powered NWR and a portable radio
  - ✓ Credit card and cash   ✓ Extra set of car keys
  - ✓ Special items for infant, elderly or disabled family members
  - ✓ Prescription and non-prescription medicines
- Establish a long-distance contact number outside the area in the event you are separated from your family members.**
- Plan ahead if you have any special needs (EFM) family members or concerns.**



# Tropical Cyclone Conditions of Readiness (COR)

## COR V

- No storm or destructive winds anticipated within 96 hours  
(Default condition during the hurricane season: June 1 - November 30)

## COR IV

- Destructive winds are anticipated within 72 hours.

## COR III

- Destructive winds are anticipated within 48 hours.

## COR II

- Destructive winds are anticipated within 24 hours.

## COR I

- Destructive winds are anticipated within 12 hours.

**\*The above times are all notional, CNRSE will lean forward on these times w/all non-emergency work happening during daylight hours only.**





# **CONDITIONS OF READINESS**

**COR V:** Set June 1<sup>st</sup> and is default through end of November.

## **Personal Preparation:**

- Plan out and drive your evacuation route.
- Be prepared to protect your home and property by having window coverings ready. Do you have screws or anchoring eqpt for your window covers?
- Make sure personal/family information is updated in NFAAS and TWMS.
- Educate your family members/children about the Conditions of Readiness and Hurricane Categories.



# **CONDITIONS OF READINESS**

**COR IV:** Destructive winds are anticipated within 72 hours.

## **Personal Preparation:**

- Monitor weather developments.
- Review family evacuation plans.
- Locate and gather all important family papers (including insurance).
- Check all emergency supplies.
- Prepare to board up your home if necessary.



## **IMPORTANT NOTE:**

**Insurance companies will not allow you to add/make changes to flooding/windstorm policies\* once an active storm has entered the Gulf of Mexico. Know your policies and the levels of your coverage beforehand.**

**\*Note – flood insurance doesn't go into affect until 30 days after date of purchase.**





# **CONDITIONS OF READINESS**

**COR III:** Destructive winds are anticipated within 48 hours.

## **Personal preparation:**

- Finalize evacuation plans.
- Remove all loose objects outside.
- Ensure all vehicles are full of fuel.
- Board up your home with plywood.
- Pack evacuation vehicles.
- Complete all unfinished emergency actions.



# **CONDITIONS OF READINESS**

**COR II:** Destructive winds are anticipated within 24.

## **Personal preparation:**

Your "GO" Kit should already be complete

EVACUATE WHEN ORDERED BY THE CO.....

**An ordered evacuation by the Commanding Officer is an ORDER!!!**



# **CONDITIONS OF READINESS**

**COR I:** Destructive winds are anticipated within 12 hours

**IF YOU HAVE NOT LEFT YET, ...SHELTER IN PLACE... IF YOU LEAVE  
NOW YOU MIGHT BE STUCK ON THE ROAD OUT IN THE OPEN**





The NASCC safe havens are currently Joint Base San Antonio (JBSA) and Joint Reserve Base Fort Worth (JRBFW). All Military personnel or those designated as Recovery Essential remain within a one-day drive of the safe haven.

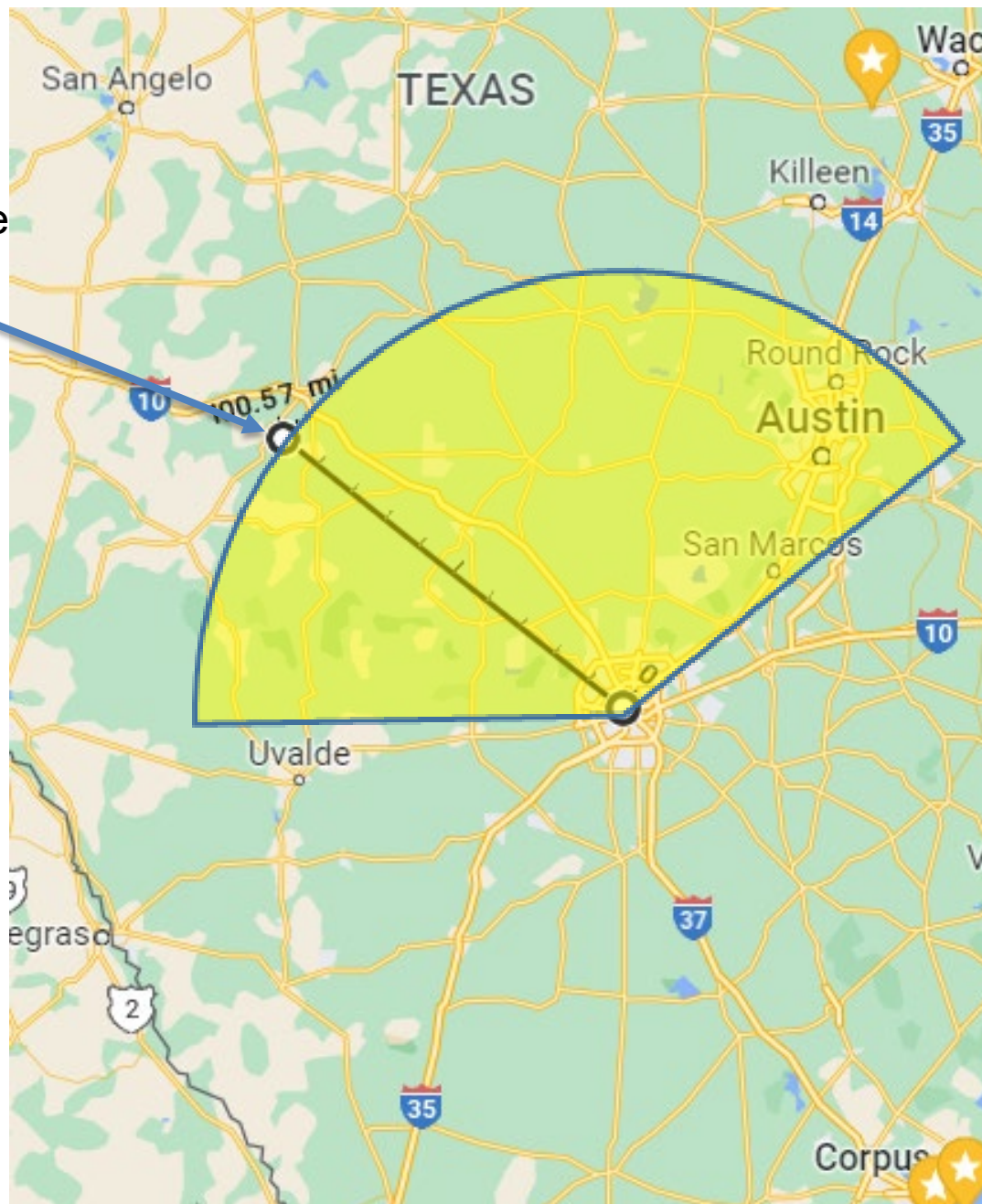
All reimbursements are the current GSA rate for the JBSA area  
rate = \$211/day (\$137/hotel & \$74/MIE)

JRBFW area rate = \$261/day (\$181/hotel & \$80/MIE)

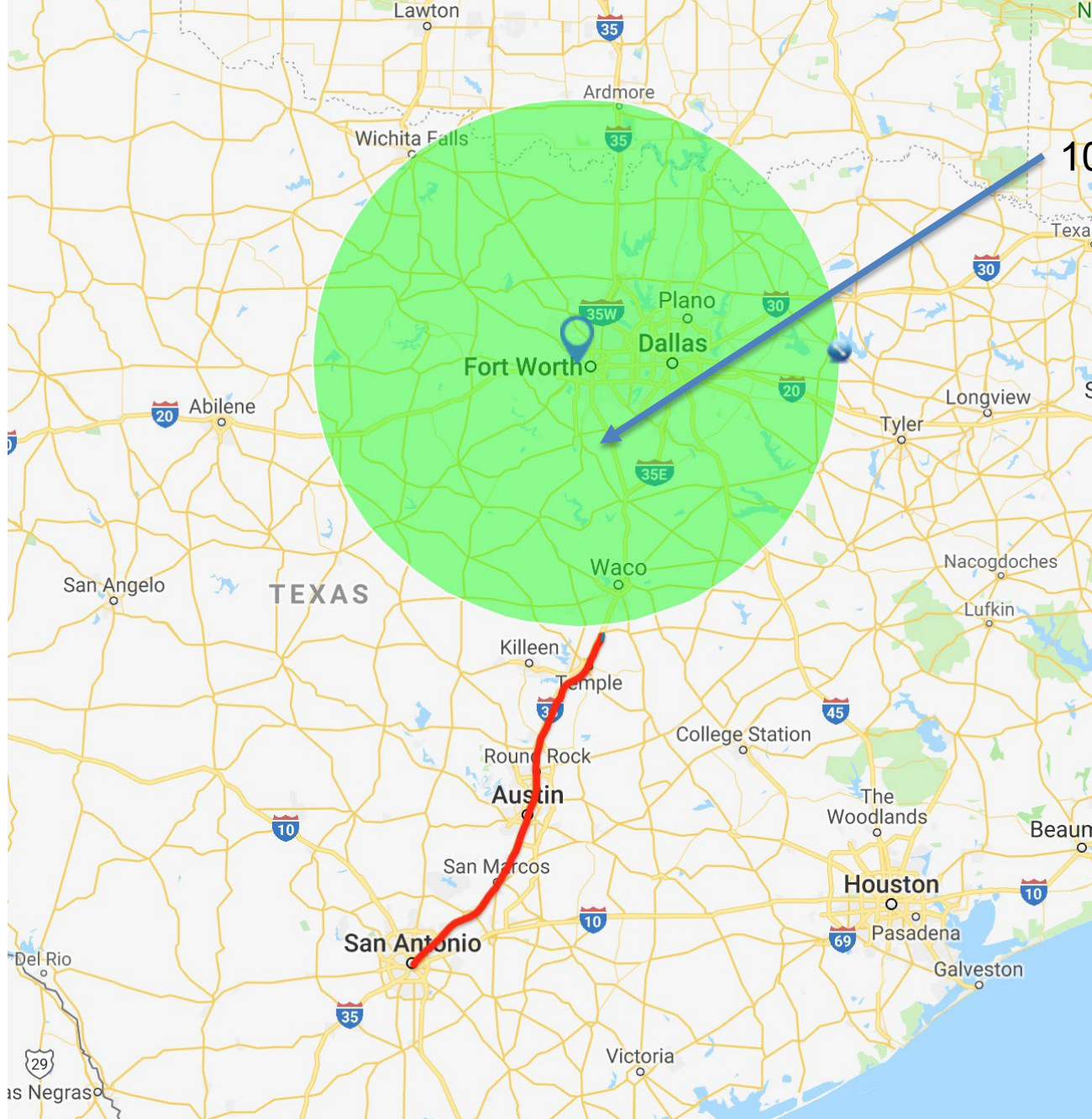
Evacuation areas are depicted in the next 2 slides. They are:

- JBSA and west or north/northeast from there within 100 miles.
- Within 100 mile radius of JRBFW and along the I-35 corridor south to San Antonio.

100 mile distance



Travel to Mexico during an evacuation is **NOT AUTHORIZED!**



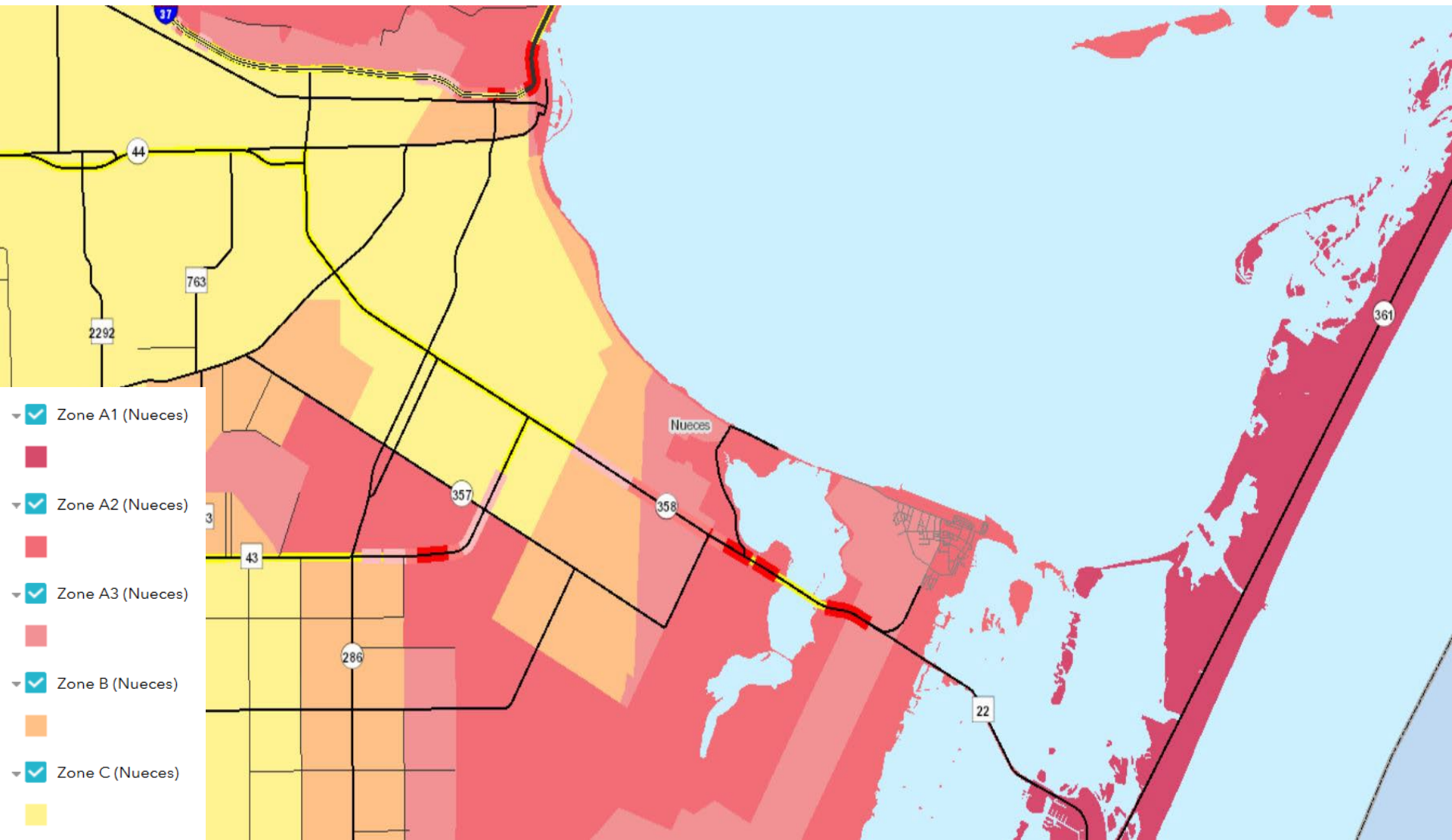
100 mile radius

Travel to Mexico during an evacuation is **NOT AUTHORIZED!**





# Evacuation Zone Map







# Evacuation Zone A2 Map









# Evacuation Zone B Map









## Evacuation routes

- Most widely used route will be Interstate 37.
- Check <https://drivetexas.org/> to see current road closures.
- There are 5 other routes to safety that emergency officials are hoping residents will consider instead of getting stuck in major congestion.
- The recommendation is to take the route that makes the most sense to you and your family.
- Determine where you want to go and what route you're going to take, plan ahead of time.





# Evacuation routes

<b>Legend</b>	
A: Laredo via SH 44/US 59	
B: San Antonio via FM 624/SH 16	
C: San Antonio via US 181	
D: San Marcos via US 181/SH 123	
E: Austin via US 77/US 183	
F: I-37 EVACULANE	
G: I-37 Contraflow Lanes	



- Laredo via SH 44/US 59
- SA via FM 624/SH 16
- SA via US 181
- San Marcos via US 181/SH 123
- Austin via US 77/US 183
- I-37 has both EVACULANE & Contraflow Lanes





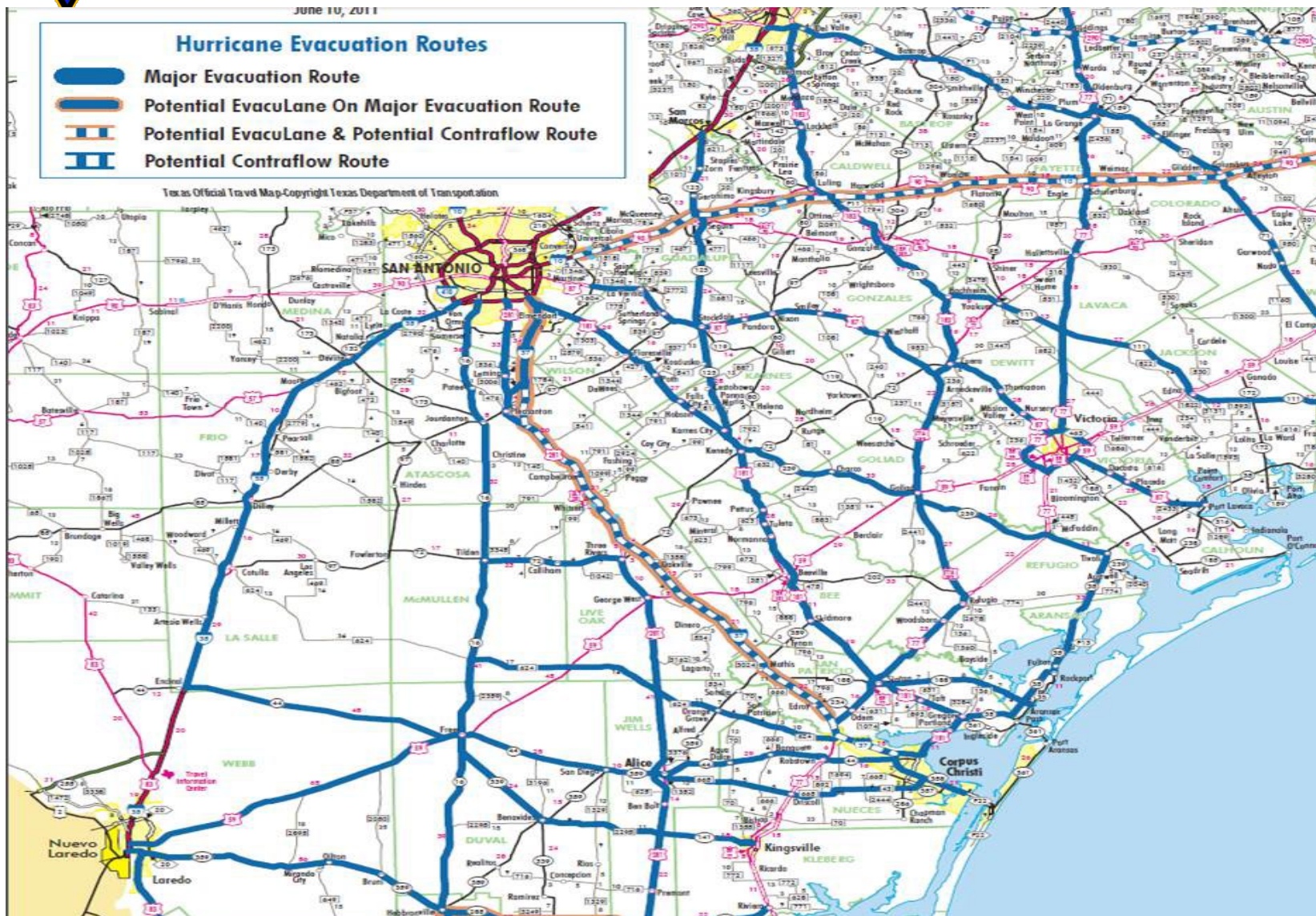
# EVACUATION MAP

June 10, 2011

## Hurricane Evacuation Routes

-  Major Evacuation Route
-  Potential Evacuation On Major Evacuation Route
-  Potential Evacuation & Potential Contraflow Route
-  Potential Contraflow Route

Texas Official Travel Map-Copyright Texas Department of Transportation





# Evacuation Mustering



- All personnel in an affected area are required to muster with their chain of command daily, providing the following info:
  - Location
  - Name/Age/Relationship to you of all personnel evacuated with you
  - Status/Needs
  - If unable to reach your immediate supervisor, call the NASCC hotline for information 1-877-378-8373
- If unable to contact your command, call the Navy Personnel Command Emergency Coordination Center (NPCECC) at 1-877-414-5358 or 1-866-297-1971 (TDD).



# ***Hurricane Preparedness Resources***



- Command Info Line 1-877-378-8373
- American Red Cross: 1-877- 272-7337
- Navy marine Corps Relief: 361-961-3482
- NASCC EM : <https://cnrse.cnice.navy.mil/Installations/NAS-Corpus-Christi/Operations-and-Management/Emergency-Management/>
- FEMA Website: <https://www.fema.gov/>
- NFAAS Website: <https://navyfamily.navy.mil> (free smart phone app available)
- Disaster Assistance: <https://www.disasterassistance.gov/>
- City Of Corpus Christi: <https://www.corpuschristitx.gov/departments-directory/fire-department/emergency-management/hurricane-preparedness-response/>





# Claims/Compensation



- Orders generated locally with Disaster Response Team (DRT) assistance “AFTER” landfall
- Claims processed and submitted locally with DRT assistance
- Active Military submit via DTS
- Civilian, dependents submit via 1351-2
- Mission Essential/Recovery Essential Personnel identified
- Ensure TWMS is update
  - Personal Recall Info (Phone #, Address)
  - Dependent info (DOB/Age)



# Evac Do's/Don'ts



- Do ***RUN FROM THE WATER,  
HIDE FROM THE WIND!***
  - Evacuate within the prescribed area
  - Utilize government travel card
    - All personnel
  - Create an Administrative Go-Kit
- Don't
  - Use 3<sup>rd</sup> Party Travel Agencies
  - Use Air BnB
  - Book and pay for rooms for non-dependents



# ***QUESTIONS ABOUT THIS PRODUCT***



Contact NASCC Emergency Management at (361) 961-1725, 2385 or 3686